

<b>Active Pharmaceutical Ingredients</b>	
<u>Chemical Name(s), CAS#, &amp; Therapeutic use</u>	<u>Structure &amp; Molecular Formula</u>

**Lansoprazole**

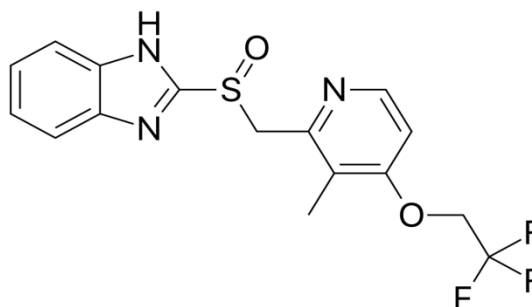
2-[[[3-Methyl-4-(2,2,2-trifluoro-ethoxy)-2-pyridyl]methyl]sulfinyl]benzimidazole.

2-[[[3-methyl-4-(2,2,2-trifluoroethoxy)pyridine-2-yl]methylsulfinyl]benzimidazole.

2-(2-Benzimidazolyl sulfinyl methyl)-3-methyl-4-(2,2,2-trifluoro-ethoxy)-2-pyridine.

CAS NO.: 103577-45-3

(Therapeutic use : Anti ulcerative.)



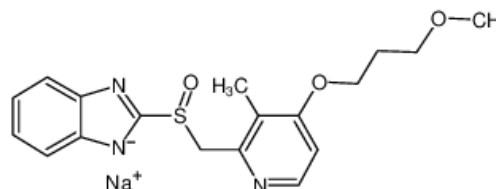
$C_{16}H_{14}F_3N_3O_2S$

**Rabeprazole Sodium**

2-[[[4-(3-Methoxypropoxy)-3Methylpyridinyl] Methyl]Thio]- 1H Benzimidazole sodium.

CAS NO.: 117976-90-6

(Therapeutic use : Anti ulcerative.)



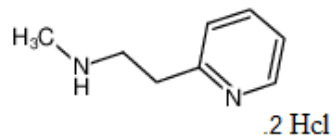
$C_{18}H_{20}N_3 NaO_3S$

**Betahistine Dihydrochloride**

Methyl[2-(2-pyridyl)ethyl]amine dihydrochloride

CAS NO.: 5579-84-0

(Therapeutic use : Vasalidator.)



$C_8H_{12}N_2 \cdot 2HCl$

Enal Drugs Private Limited

D-33, 34 & 35, Phase - I, IDA, Jeedimetla, Quthbullapur Mandal, Medchal-Malkajgiri District -500055, Telangana, INDIA

Tel: +91-40-44753636 +91-40-23193623/24/25

[www.enaldrugs.com](http://www.enaldrugs.com)

[customercare@enaldrugs.com](mailto:customercare@enaldrugs.com)

## Active Pharmaceutical Ingredients

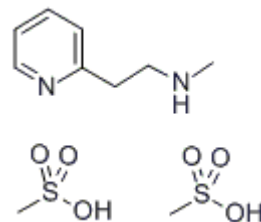
<u>Chemical Name(s), CAS#, &amp; Therapeutic use</u>	<u>Structure &amp; Molecular Formula</u>
--	--

### Betahistine Mesylate

2-[2-(Methylamino)ethyl]pyridine  
Methanesulfonate.

CAS NO.: 54856-23-4

(Therapeutic use : Dizziness.)



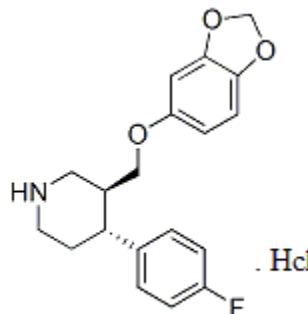
$C_8H_{12}N_2 \cdot 2CH_4O_3S$

### Paroxetine Hydrochloride

(3S,4R)-3-(1,3-benzodioxol-5-yloxymethyl)-  
4-(4-fluorophenyl)piperidine hydrochloride.

CAS NO.: 78246-49-8

(Therapeutic use : Anxiety Disorder.)



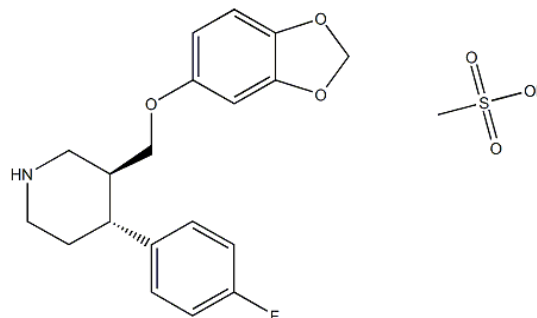
$C_{19}H_{20}FNO_3$

### Paroxetine Mesylate

(3S,4R)-3-[(1,3-Benzodioxol-5-yl oxy)  
methyl]-4-phenylpiperidine  
methanesulfonate

CAS NO.: 217797-14-3

(Therapeutic use : Anti-Depressant.)



$C_{20}H_{24}FNO_6S$

Enal Drugs Private Limited

D-33, 34 & 35, Phase - I, IDA. Jeedimetla, Quthbullapur Mandal, Medchal-Malkajgiri District -500055,  
Telangana, INDIA

Tel: +91-40-44753636 +91-40-23193623/24/25

[www.enaldrugs.com](http://www.enaldrugs.com)

[customercare@enaldrugs.com](mailto:customercare@enaldrugs.com)

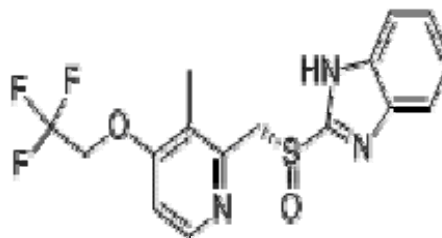
## Active Pharmaceutical Ingredients

**Chemical Name(s), CAS#, & Therapeutic use**

**Structure & Molecular Formula**

### Dexlansoprazole

-(R)-[[3-methyl-4--(2,2,2-trifluoroethoxy)-2-pyridinyl]methyl]sulfinyl]-1H-benzimidazole



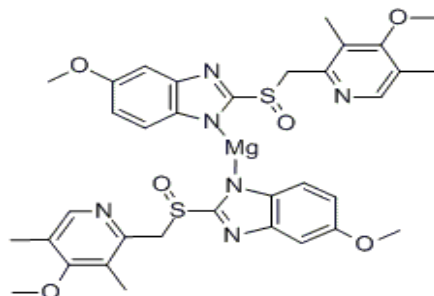
CAS NO.: 138530-94-6

(Therapeutic use : Anti-Ulcer.)

$C_{16}H_{14}F_3N_3O_2S$

### Esomeprazole magnesium Trihydrate

bis(5-methoxy-2-[(s)-[(4-methoxy-3,5-dimethyl-2-pyridinyl)methyl]sulfinyl]-1H-benzimidazole-1-yl)magnesium trihydrate.



CAS NO.: 217087-09-7

(Therapeutic use : Anti-Ulcer.)

$H_2O$        $H_2O$        $H_2O$

$C_{34}H_{42}MgN_6O_9S_2$

Enal Drugs Private Limited

D-33, 34 & 35, Phase - I, IDA. Jeedimetla, Quthbullapur Mandal, Medchal-Malkajgiri District -500055,  
Telangana, INDIA

Tel: +91-40-44753636 +91-40-23193623/24/25

[www.enaldrugs.com](http://www.enaldrugs.com)

[customercare@enaldrugs.com](mailto:customercare@enaldrugs.com)

## Active Pharmaceutical Ingredients

**Chemical Name(s), CAS#, & Therapeutic use**

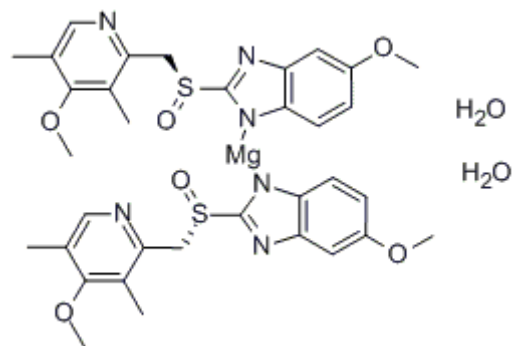
**Structure & Molecular Formula**

### Esomeprazole magnesium Dihydrate

**bis(5-methoxy-2-[(s)-[(4-methoxy-3,5-dimethyl-2-pyridinyl)methyl]sulfinyl]-1H-benzimidazole-1-yl)magnesium dihydrate.**

**CAS NO.: 217087-10-0**

**(Therapeutic use : Anti-Ulcer.)**



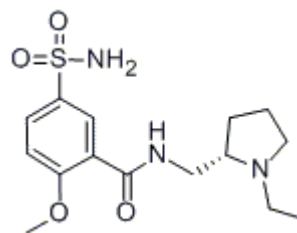
**C<sub>34</sub>H<sub>36</sub>MgN<sub>6</sub>O<sub>6</sub>S<sub>2</sub> 2H<sub>2</sub>O**

### Levosulpiride

**(S)-5-Aminosulfonyl-N-[(1-ethyl-2-pyrrolidinyl)methyl]-2-methoxybenzamide.**

**CAS NO.: 23672-07-3**

**(Therapeutic use : Anti-Psychotic.)**



**C<sub>15</sub>H<sub>23</sub>N<sub>3</sub>O<sub>4</sub>S**

Enal Drugs Private Limited

D-33, 34 & 35, Phase - I, IDA. Jeedimetla, Quthbullapur Mandal, Medchal-Malkajgiri District -500055,  
Telangana, INDIA

Tel: +91-40-44753636 +91-40-23193623/24/25

[www.enaldrugs.com](http://www.enaldrugs.com)

[customercare@enaldrugs.com](mailto:customercare@enaldrugs.com)