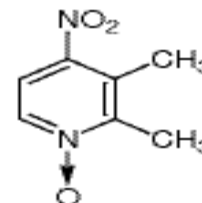


Lansoprazole Intermediates

Product Name (s), CAS # & End use.	Structure & Molecular Formula
------------------------------------	-------------------------------

4-Nitro-2,3-dimethylpyridine-N-oxide



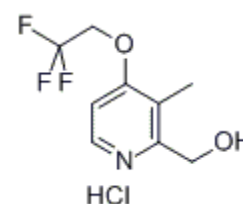
(Lanso-nitro)

CAS NO. : 37699-43-7

End use : Lansoprazole

$C_7H_8N_2O_3$

2-Hydroxymethyl-3-methyl-4-(2,2,2-trifluoroethoxy) pyridine hydrochloride



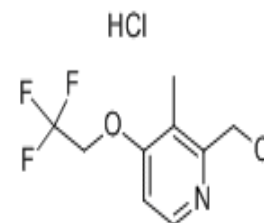
(Lanso-Hydroxy)

CAS NO. : 103577-66-8

End use : Lansoprazole

$C_9H_{11}ClF_3NO_2$

2-Chloromethyl, 3-methyl-4-[2,2,2-trifluoroethoxy] pyridine hydrochloride



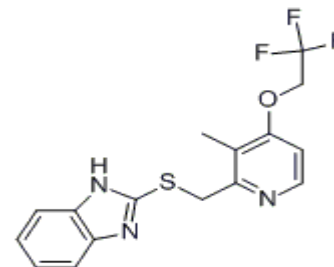
(Lanso chloro)

CAS NO. : 127337-60-4

End use : Lansoprazole

$C_9H_{10}Cl_2F_3NO$

2-[3-Methyl-4-(2,2,2-trifluoroethoxy)-2-pyridinyl]methyl[thio]benzimidazole



(Lanso sulphide)

CAS NO. : 103577-40-8

End use : Lansoprazole

$C_{16}H_{14}F_3N_3OS$

Enal Drugs Private Limited,
D-33, 34 & 35, Phase - I, IDA, Jeedimetla, Quthbullapur Mandal, Medchal-Malkajgiri District -500055,
Telangana, INDIA

Tel: +91-40-44753636 +91-40-23193623/24/25

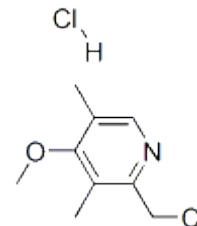
www.enaldrugs.com

customercare@enaldrugs.com

Omeprazole Intermediates

Product Name (s), CAS # & End use.**Structure & Molecular Formula**

2-(Chloromethyl)-4-methoxy-3,5-
-dimethyl pyridine hydrochloride



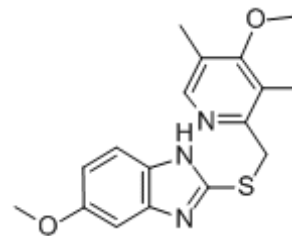
(Omeprazole chloro)

CAS NO. : 86604-75-3

End use : Omeprazole & Esomeprazole

$C_9H_{13}Cl_2NO$

5-Methoxy-2-[[[4-methoxy-3,5-dimethyl-2-pyridyl)
methyl]thio]benzimidazole



(Omeprazole sulphide)

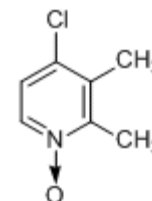
CAS NO. : 73590-85-9

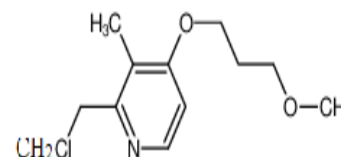
End use : Omeprazole & Esomeprazole

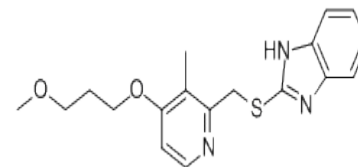
$C_{17}H_{19}N_3O_2S$

Rabeprazole Intermediates

Product Name (s), CAS # & End use.
Structure & Molecular Formula

4-Chloro-2,3-dimethyl pyridine N-oxide

CAS NO. : 59886-90-7
End use : Rabeprazole
C₇H₈ClNO

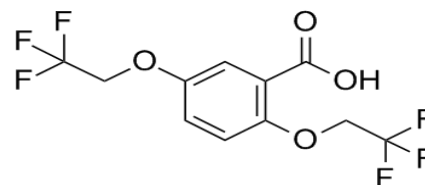
2-Chloromethyl-3-methyl-4-(3-methoxy propoxy)
pyridine hydrochloride

(Rabeprazole chloro)
CAS NO. : 153259-31-5
End use : Rabeprazole
C₁₁H₁₆NO₂Cl.HCl

**2-((4-(3-Methoxypropoxy)-3-methyl
-2 pyridyl)methyl thio benzimidazole**

(Rabeprazole sulphide)
CAS NO. : 117977-21-6
End use : Rabeprazole
C₁₈H₂₁N₃O₂S

Flecainide Intermediates

Product Name (s), CAS # & End use.**Structure & Molecular Formula**

2,5-bis(2,2,2-trifluoroethoxy)benzoic acid



CAS NO . : 35480-52-5

End use : Flecainide

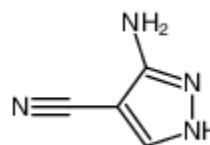
 $C_{11}H_8O_4F_6$

Zaleplon Intermediates

Product Name (s), CAS # & End use.**Structure & Molecular Formula**

3 - Aminopyrazole-4-carbonitrile

3 - Amino - 4 - cyano pyrazole



CAS NO. : 16617-46-2

End use : Zaleplon

 $C_4H_4N_4$

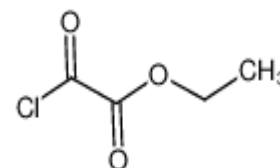
Luliconazole Intermediates

Product Name (s), CAS # & End use.**Structure & Molecular Formula**

1-(Cyanomethyl)imidazole**CAS NO. : 98873-55-3****End use : Luliconazole****C₅H₅N₃**

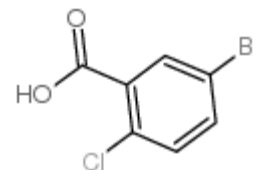
Edoxaban Intermediates

Product Name (s), CAS # & End use.**Structure & Molecular Formula**

Ethyl oxalyl chloride**CAS NO. : 4755-77-5****End use : Edoxaban****C₄H₅ClO₃**

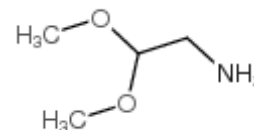
Empagliflozin Intermediates

Product Name (s), CAS # & End use.
Structure & Molecular Formula

2-Chloro-5-bromobenzoic acid

CAS NO. : 21739-92-4
End use : Empagliflozin
C₇H₄BrClO₂

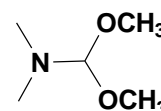
Dolutegravir/Rucaparib Intermediates

Product Name (s), CAS # & End use.
Structure & Molecular Formula

Amino acetaldehyde dimethyl acetal

CAS NO. : 22483-09-6
End use : Dolutegravir/Rucaparib
C₄H₁₁NO₂

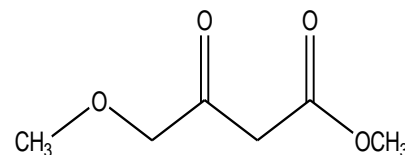
Dolutegravir/Imatinib Intermediates

Product Name (s), CAS # & End use.
Structure & Molecular Formula

N,N-Dimethyl formamide dimethyl acetal

CASNo.:4637-24-5
End use : Dolutegravir/Imatinib
C₅H₁₃NO₂

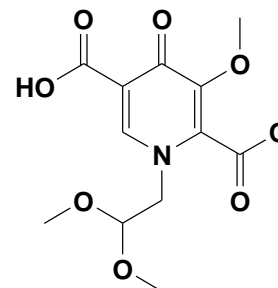
Dolutegravir Intermediates

Product Name (s), CAS # & End use.
Structure & Molecular Formula

Methyl-4-methoxy acetoacetate

CAS No: 41051-15-4
End use : Dolutegravir
C₆H₁₀O₄

Dolutegravir Intermediates

Product Name (s), CAS # & End use.
Structure & Molecular Formula

1-(2,2-Dimethoxyethyl)-5-methoxy-6-(methoxycarbonyl)-4-oxo-1,4-dihydropyridine-3-carboxylic Acid

CAS No.:1335210-23-5
End use : Dolutegravir
C₁₃H₁₇NO₈

Enal Drugs Private Limited,
D-33, 34 & 35, Phase - I, IDA. Jeedimetla, Quthbullapur Mandal, Medchal-Malkajgiri District -500055,
Telangana, INDIA

Tel: +91-40-44753636 +91-40-23193623/24/25

www.enaldrugs.com

customercare@enaldrugs.com